

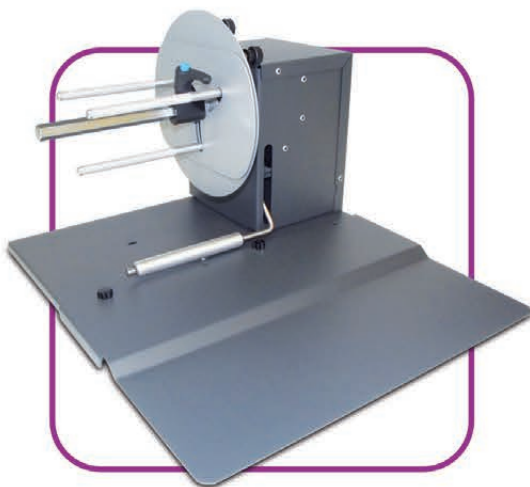
# A WORLD OF SOLUTIONS

THESE PRODUCTS ARE CERTIFIED:



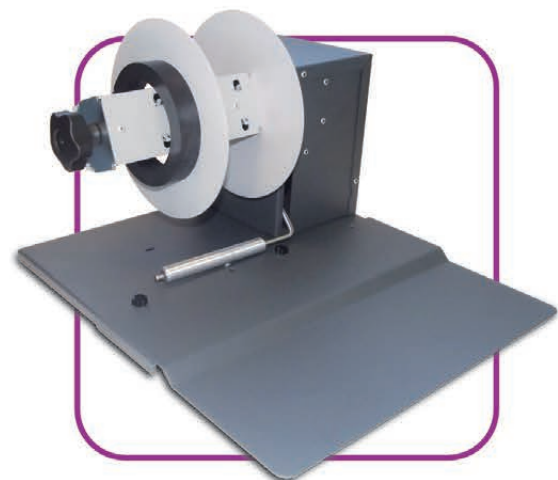
## SMART SOLUTIONS FOR THE LABELING INDUSTRY

### SMALL LABEL REWINDER



model **SRA**

*Small Rewinder with adjustable core holder*



model **SR4**

*Small Rewinder with 3" fixed core holder*

Our range of small label rewinders can handle labels up to 120mm and rewind rolls with diameter up to 170mm. Users can choose among 2 different types of core holder: the adjustable one from 40mm up to 76mm and 3". Rewinders are equipped with an external auto-switching 100/240VAC - 2.5A  $\overline{\text{~}}$  at 24V power supply and an electronic circuit controls the functions.

The motor speed is 120rpm. When the roll of labels runs out, the rewriter stops by uttering an acoustic signal. The possibility to adjust the sense of rotation, clockwise or counterclockwise, allows to rewind the labels face in or face out.

The tension arm adjusts the speed of rotation: when it is down, the rewriter turns at full speed, whereas when the tension arm is up, the rewriter is idle and blocks the motor's rotation when the printer stops.

Our small label rewriter series is available in two different versions and every model is marked by its own code.

"All-in-one" version (SRAP - SR4P)

If our small label rewriter is used as a support for printers with "feedback" (the printer pull back the paper to check the gap before printing), it will must have an "all-in-one" circuit to ensure the unwinding of roll, following the movement of the printer. The unit keeps all other features unchanged.

*SRAP*: Small Rewinder "All-in-one" with adjustable core holder.

*SR4P*: Small Rewinder "All-in-one" with 3" fixed core holder.